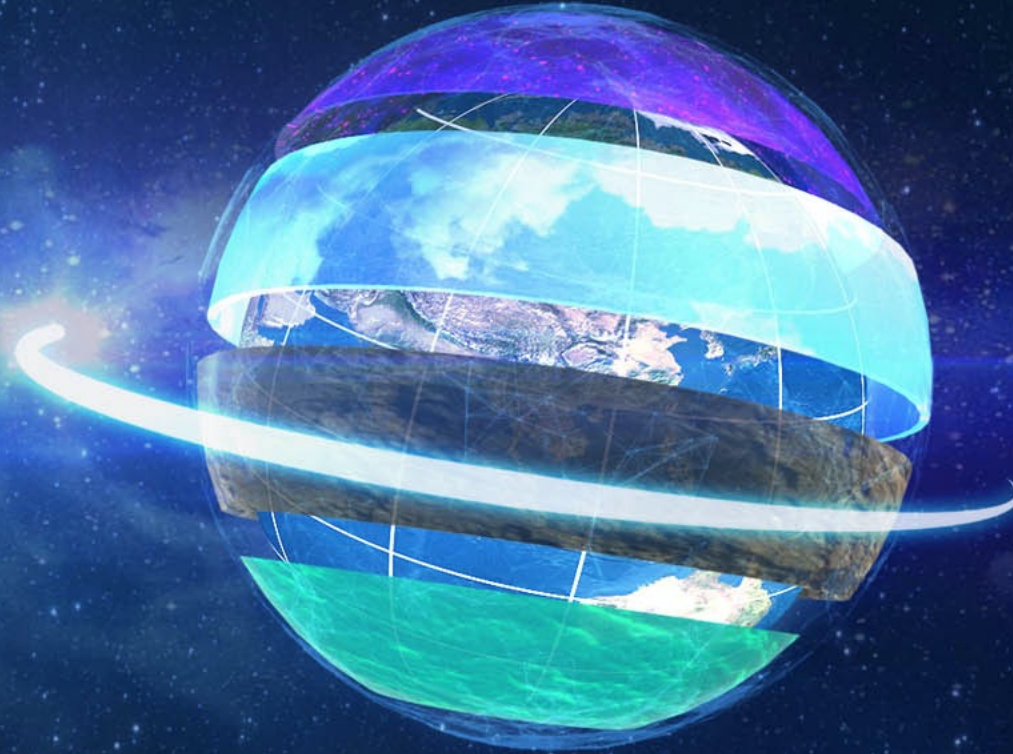


*Where Courage Meets Technology*



# **DEVELOPMENT CERTIFICATION AND PRODUCTION OF BUSINESS JETS AT IAI**



UNCLASSIFIED

This document contains proprietary information of Israel Aerospace Industries Ltd. and may not be reproduced, copied, disclosed or utilized in any way in whole or in part, without the prior written consent of Israel Aerospace Industries Ltd



# Commercial & Military Aircraft Development



Competitive Sensitive

# Business-Jets - Major International Programs

Development, Certification, Manufacture, Assembly & After-sales Support

The G150 and the G280 business-jets were co-developed with Gulfstream and are an integral part of the Gulfstream family of business-jets.

More than 1,000 Business-Jets originated from IAI since 1971

**G150**  
Midsize  
Business-Jet



**G200**  
Super-midsize  
Business-Jet



**G280**  
New Super-midsize  
Business-Jet



# G100 (Astra SPX)

## Midsize Business-Jet



Major program milestones:

Program launching: 1980

First flight: Mar. 1984

Certification: Aug. 1985

A total of more than 150 aircraft were produced

Last aircraft delivery: January 2006

Was replaced by the Wide Cabin G150



Dispatch Reliability & Availability

12 Month Average:

NBAA D/R (Oct. 10) - 99.63%

NBAA Avail. (Oct. 10) - 91.43%

# G150

## Midsize Business-Jet

Part of the Gulfstream family of business-jets



The performance leader in its class, with a surprisingly spacious cabin

With max. speed of .85 Mach, the G150 offers the best performance in its class. At a long-range cruise speed of .75 Mach, it can cover 2,950 NM easily with 4 pax., on nonstop U.S.A. coast-to-coast trips. The G150 features a spacious cabin with stand-up headroom, ample aisle space, and generous seated headroom and legroom.

In production (certification: Nov.2005)

Entry into service: Aug.2006



**Dispatch Reliability & Availability  
12 Month Average:**

NBAA D/R (March 13) - 99.82%

NBAA Avail. (March 13) – 91.80%

# G200

## Super-Midsize Business-Jet

Since 2001 - part of the Gulfstream family of Business-Jets



Large cabin, true intercontinental capability

The G200 features a maximum range of 3,400 NM with IFR reserves: Nonstop Los-Angeles to Caracas, Tokyo to Singapore, Berlin to Delhi.

Balanced performance combines high-speed and long-range, with excellent climb capability, 45,000 ft cruising altitude and short-landing capability.

Certification: Dec.1999

Dispatch Reliability & Availability  
12 Month Average:

NBAA D/R (March 13) - 99.88%

Availability (March 13) - 88.33%

# G280

## The New Model of Super-Midsize Business-Jet

### Significant improvement in operational performance

- Longest-range & Highest-speed in its class
- Takeoff performance equal to or better than competitors
- Excellent payload and time-to-climb

### Best-in-class cabin

- Longest cabin
- Better cross-section
- Largest baggage volume



---

Max TOW	39,600 lbs
---------	------------

---

Passengers	2+10
------------	------

---

IFR Range	3,600 nm
-----------	----------

---

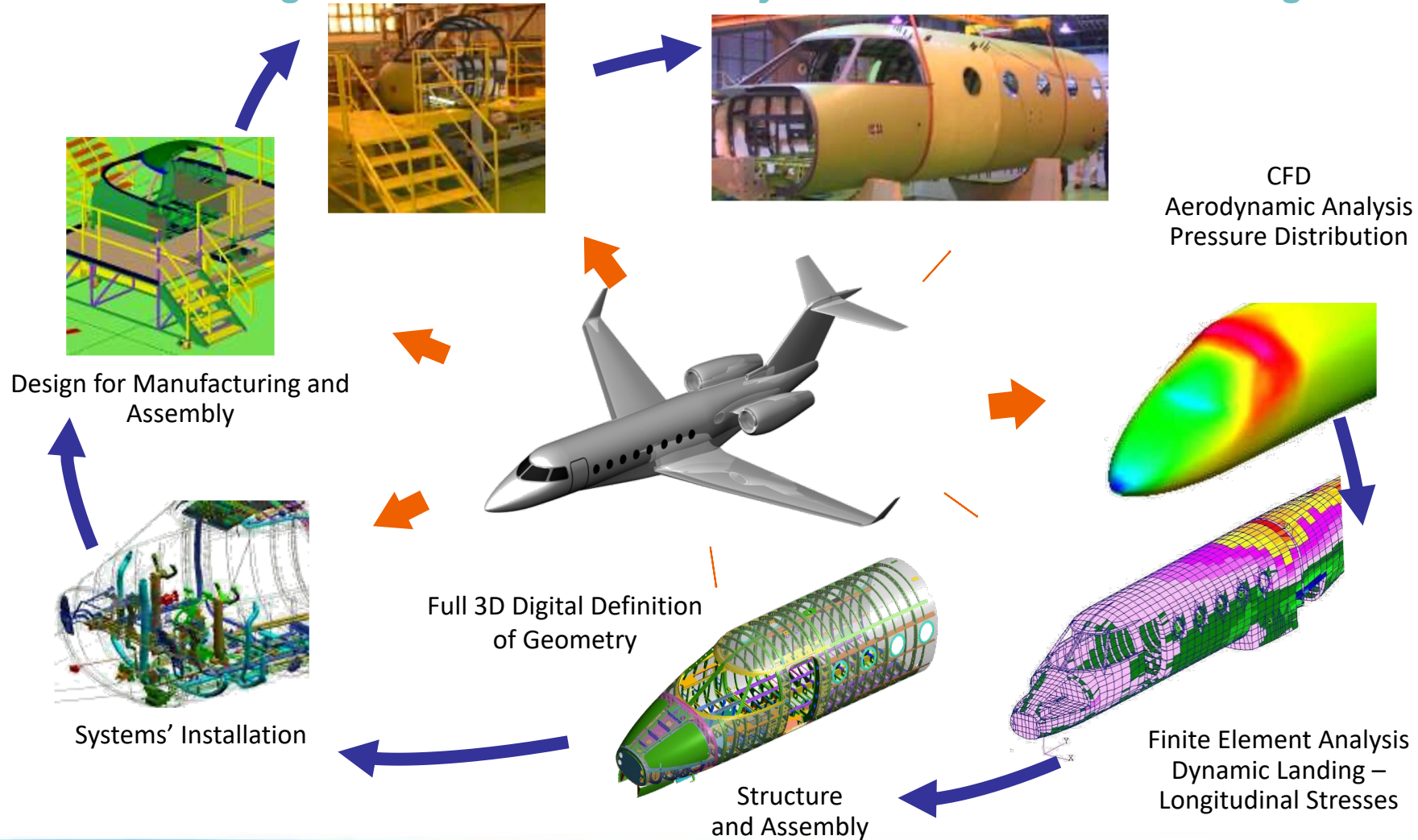
Max Speed	0.85M
-----------	-------

---

**99.8% Dispatch Reliability - Best in Class**

# Computerized Development & Manufacturing

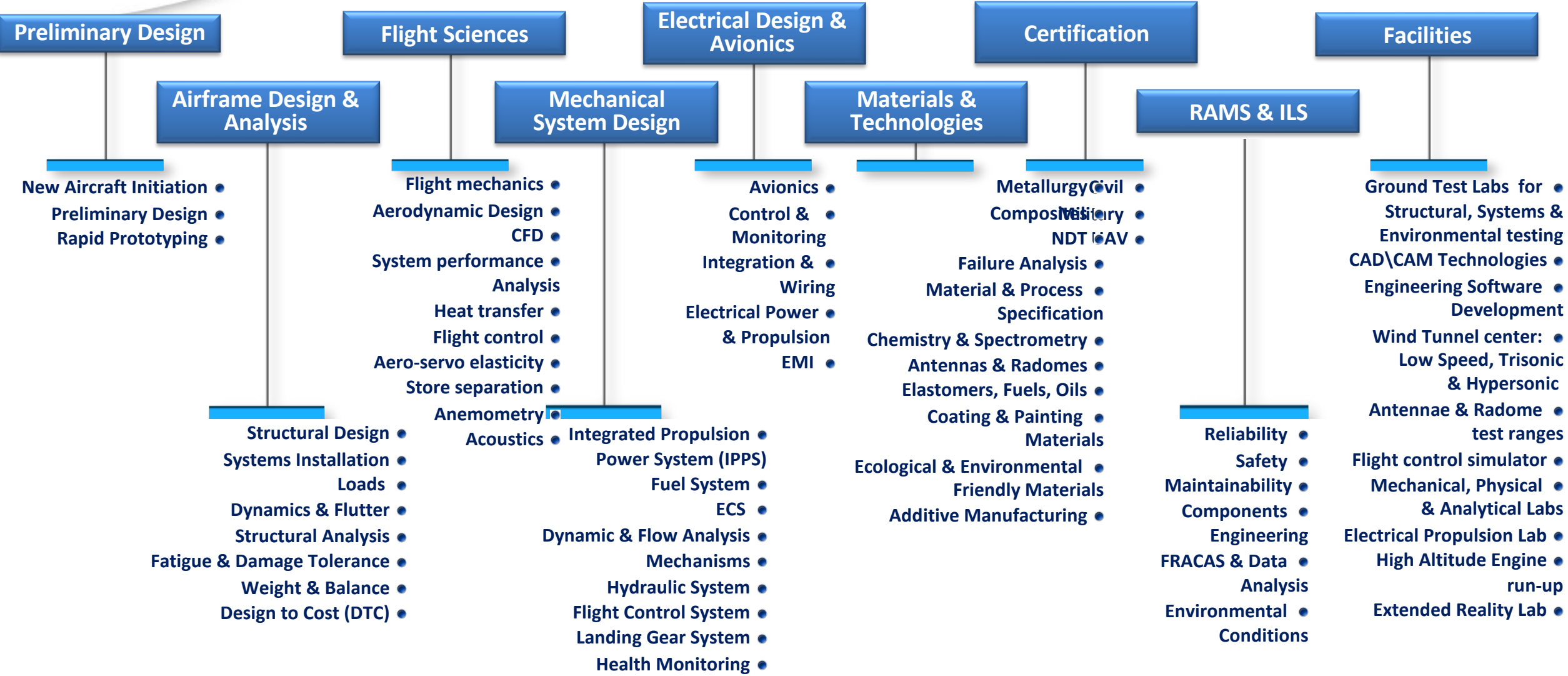
## Same Digital Model From Geometry-Definition to Manufacturing







# Comprehensive Capabilities



**A multitude of centers of knowledge, for full A/C Development Capability**

# Major Development Facilities



- Wind Tunnel Center
- Ground Test Center
- Flight Test Center
- Simulator Center
- Antennae & Radome test ranges
- System Integration Labs



# Fully Integrated Capability

The **IAI Engineering Center** offers a single site, cost-effective aerospace engineering center.

The Engineering Center encompasses **every engineering discipline** and expertise for the integrative development of a complete aircraft - from concept definition to prototype testing and certification.

- 
- Preliminary Design
  - Aerodynamics
  - Geometric Definition
  - Wind tunnel Tests
  - Airframe & Detailed Design
  - Mechanical Systems
  - Flight Control
  - Structural Analysis
  - Ground Tests
  - Electrical
  - Heat Transfer
  - Reliability & Maintainability
  - Avionics
  - Systems Integration
  - Manufacturing
  - Flight Tests
  - Certification



From Digital....



to reality



From Digital....



....to reality.

G280





UNCLASSIFIED

This document contains proprietary information of Israel Aerospace Industries Ltd. and may not be reproduced, copied, disclosed or utilized in any way in whole or in part, without the prior written consent of Israel Aerospace Industries Ltd

# Aircraft Modifications - as OEM

**WW1124 – Maritime  
Maritime Patrol Radar  
Installation**



**WW1125 – SAR Installation**



# Aircraft Modifications - as OEM

## WW1124 – Towing Target



## WW1125 – Towing Target



